



June, 2011

Subject: MCX-RC100/A300/P200 Firmware Update Version 2.34

Yamaha is pleased to offer the following firmware update to ensure the best possible performance and latest features for your MusicCAST2 System.

This firmware includes the following improvements.

1. Improves Rhapsody online music service connectivity (For USA model only)

Choose from the following 2 methods to update your MusicCAST2 products.

- ✓ [Click here for Firmware Update Through the Internet](#)
(Connection to the Internet is required)
- ✓ [Click here for Firmware Update by USB](#)
(A USB thumb drive is required)

If your MusicCAST2 is connected to the internet, Network Update is recommended.

< IMPORTANT NOTICE >

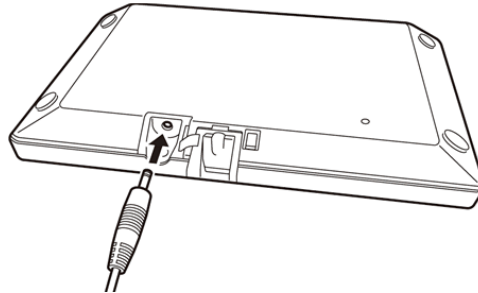
Do not attempt to update your Yamaha receiver using any other data file except those provided directly from the Yamaha website or through your network connection.

Follow the instructions carefully and do not attempt any other procedures not specified in the instructions provided by Yamaha.

Improperly updated products may cause improper operation, and any parts or service required to restore proper operation will not be covered under the Yamaha Limited Warranty.

Firmware Update Through the Internet

STEP1 Plug the AC cable directly to the Music Commander

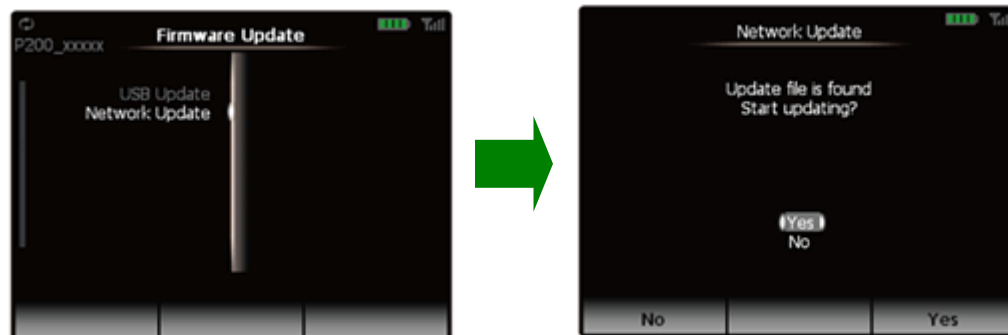


STEP2 Perform network update for the Music Commander (MCX-RC100)

From the Music Commander, select the following and start update.

NOTE: Music Commander must be charged 50% or more.

Setup > [SYSTEM] > [Firmware Update] > [Network Update] > Yes



Allow about 4 minutes for the update.
When completed, Music Commander will restart.

STEP3 Check updated version of the Music Commander (MCX-RC100)

From the Music Commander, select the following and check current version

ZONE > Setup > [SYSTEM]



Version of
Music Commander

STEP4 Select the Music Player you wish to firmware update

Press ☐ on the Music Commander and select.

Selected
Music Player



STEP5 Perform network update for the Music Player (MCX-A300/P200)

From the Music Commander, select the following and start update.

> [CLIENT] > [SYSTEM] > [Firmware Update] > Network Update] >



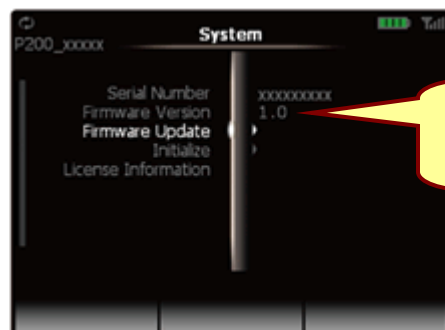
Allow about 3 minutes for the update.

When completed, the Music Player automatically restarts and the Music Commander's display returns to the "Zone" screen.

STEP6 Check updated version of the Music Player (MCX-A300/P200)

From the Music Commander, select the following and check updated version.

> [CLIENT] > [SYSTEM]



Version of
Music Player

Congratulations!

The Music Commander and Music Player are now updated.

Remove AC cable from the Music Commander and connect it back to the cradle.

Firmware Update by USB

STEP1 Prepare a USB thumb drive for the update

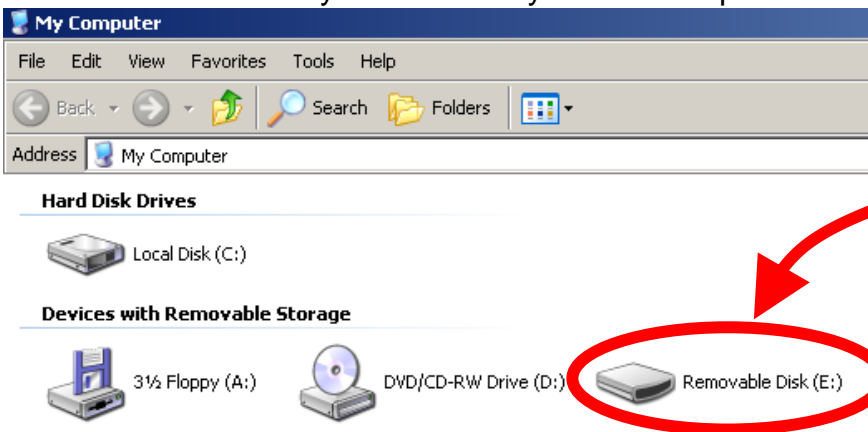
Download the corresponding firmware file for your MusicCAST2 from Yamaha website.

“MCX-RC100_xxxx.bin” is the firmware for Music Commander (MCX-RC100)

“MCX-A300_xxxx.bin” is the firmware for Music Player (MCX-A300)

“MCX-P200_xxxx.bin” is the firmware for Music Player (MCX-P200)

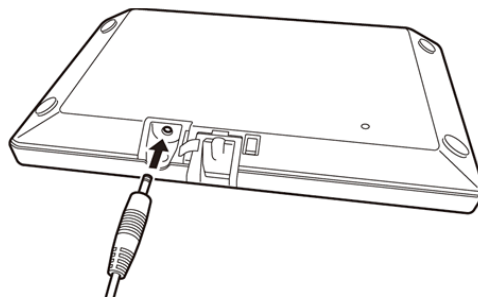
Then, copy the corresponding firmware files to the root folder of your USB thumb drive. MusicCAST2 will identify the necessary file for the update.



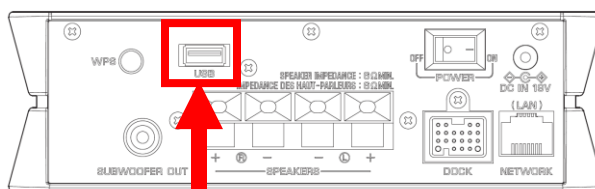
The firmware files,
MCX-RC100_xxxx.bin
MCX-A300_xxxx.bin
MCX-P200_xxxx.bin

Note: We recommend that you **DO NOT** store any other files or documents on your thumb drive during this firmware update

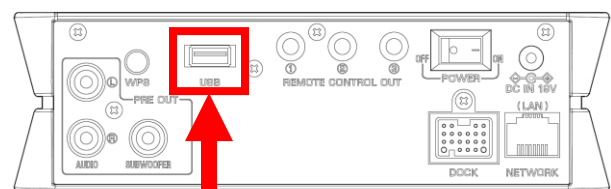
STEP2 Plug the AC cable directly to the Music Commander



STEP3 Insert the USB thumb drive to the Music Player (MCX-A300 or MCX-P200) USB terminal is located on the rear side



MCX-A300



MCX-P200

STEP4 Select the Music Player which USB thumb drive is inserted.

Press ☐ ZONE on the Music Commander and select

**Selected
Music Player**



STEP5 Perform USB update for the Music Commander (MCX-RC100)

NOTE: Music Commander must be charged 50% or more.

From the Music Commander, select the following and start update.

Setup > [SYSTEM] > [Firmware Update] > [USB Update] > Yes



Allow about 4 minutes for the update.

When completed, Music Commander will restart.

STEP6 Check updated version of the Music Commander (MCX-RC100)


From the Music Commander, select the following and check current version.

☐ ZONE > Setup > [SYSTEM]



Version of Music
Commander

STEP7 Select the Music Player which USB thumb drive is inserted.

Press  on the Music Commander and select.

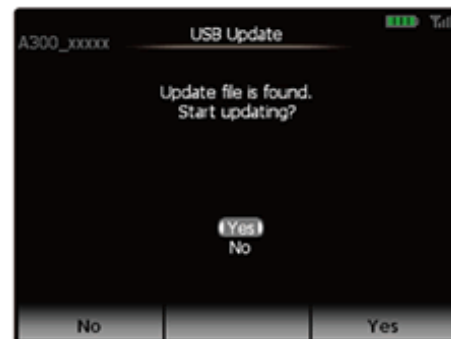
**Selected
Music Player**



STEP8 Perform USB update for the Music Player (MCX-A300/P200)

From the Music Commander, select the following and start update.

 > [CLIENT] > [SYSTEM] > [Firmware Update] > [USB Update] > 



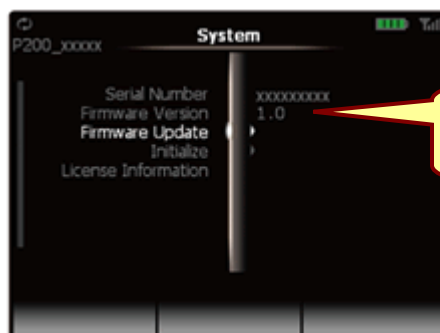
Allow about 3 minutes for the update.

When completed, the Music Player automatically restarts and the Music Commander's display returns to the "Zone" screen.

STEP9 Check updated version of the Music Player (MCX-A300/P200)

From the Music Commander, select the following and check updated version.

 > [CLIENT] > [SYSTEM]



**Version of
Music Player**

Congratulations!

The Music Commander and Music Player are now updated.

Remove USB thumb drive and connect the AC cable back to the cradle.