

# Installation Series

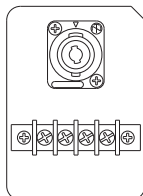
## Speaker System



IF2112



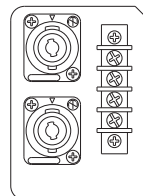
IF2112 (M)  
Rear Panel



IF2112/AS



IF2112/AS  
Rear Panel



IF2112

IF2112M

IF2112/AS

***Two-way full-range models with 12-inch woofers deliver extraordinarily well-balanced sound.***

- Sound and phase characteristics matched with all other Installation Series models for optimum performance in any combination.
- 12" woofer specially treated for superior sound and durability.
- 3" high-frequency compression driver with 1.4" exit (IF2112 and IF2112/AS) or 1.7" high-frequency compression driver with 1.4" exit (IF2112M).
- Three horn dispersion patterns available for IF2112 and IF2112M: 60° x 40° (/64), 90° x 50° (/95), and 90° x 90° (/99).
- Horn can be rotated 90-degrees for vertical or horizontal mounting.
- Switchable between passive and bi-amp operation.
- Fifteen 10-mm (M10) screw and four 8-mm (M8) screw suspension points provided for flexible rigging on the IF2112 and IF2112M; 16 10-mm screw (M10) points on the IF2112/AS.
- Durable black or white finish (can be painted to match any interior).
- Optional matching array frame and U-bracket available for the IF2112 and IF2112M.
- Optional matching U-bracket available for the IF2112/AS.
- Parallel-wired Neutrik NL4 and barrier strip connectors.
- IF2112/AS cabinet design is ideal for floor monitor use. Also features pole socket\* for pole mounting.

*\*Warning when using the pole socket*

*Make sure that the pole is mounted vertically when you mount the speaker to the pole.*

*Please refer to the Owner's Manual for details.*

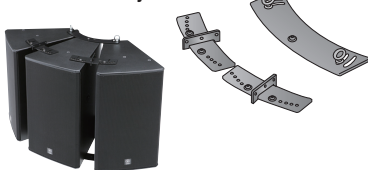
### OPTIONS

#### Accessories

Durable black or white finish which can be painted to match any interior.

#### HAF3-2112

Horizontal Array Frame

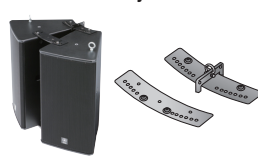


Weight:  
9kg (19.8lbs)

\*available for IF2112 and IF2112M

#### HAF2-2112

Horizontal Array Frame



Weight:  
4kg (8.8lbs)

\*available for IF2112 and IF2112M

#### VAF2-2112

Vertical Array Frame



Weight:  
4kg (8.8lbs)

\*available for IF2112 and IF2112M

#### UB2112

U-Brackets



Weight:  
4kg(8.8lbs)

Download the Rigging Guide from Yamaha's website for rigging details:

<http://www.yamahaproaudio.com/>

## Installation Series

### GENERAL SPECIFICATIONS

Model			IF2112/64	IF2112/95	IF2112/99	IF2112/AS	
Nominal coverage @-6dB (Horizontal x Vertical)			60 x 40 (rotatable)	90 x 50 (rotatable)	90 x 90	60-100 x 60 (rotatable)	
Nominal impedance	Passive		8Ω				
	Bi-amp MF/HF		LF:8Ω, HF:8Ω				
Power rating	Passive <sup>*1</sup>	NOISE	600W				
		PGM	1200W				
		MAX	2400W				
	Bi-amp LF/HF <sup>*2</sup>	NOISE	LF:700W, HF:110W				
		PGM	LF:1400W, HF:220W				
		MAX	LF:2800W, HF:440W				
Sensitivity (1W, 1m)	Passive		96dB SPL				
	Bi-amp	LF	96dB SPL				
		HF	110dB SPL	108dB SPL	106dB SPL	108dB SPL	
		Continuous SPL (calculated)	Passive	124dB SPL			
Bi-amp	LF		124dB SPL				
	HF		130dB SPL	128dB SPL	126dB SPL	128dB SPL	
Peak SPL (calculated)	Passive		130dB SPL				
	Bi-amp	LF	130dB SPL				
		HF	136dB SPL	134dB SPL	132dB SPL	134dB SPL	
		Components	LF	12" woofer, 4" voice coil			
HF	Rotatable constant directivity horn, 1.4" exit, 3" voice coil compression driver						
Frequency range (-10dB) <sup>*3</sup>			50Hz-20kHz				
Passive Crossover Frequency <sup>*4</sup>			900Hz		1.2kHz	1.1kHz	
Connectors			1 x NL4 and barrier strip, wired in parallel			2 x NL4 and barrier strip, wired in parallel	
Shape			30 degrees trapezoidal			Multi-angle wedge	
Dimensions (W x H x D)			378 x 695 x 454mm (14.9" x 27.4" x 17.9")			378 x 695 x 333mm (14.9" x 27.4" x 13.1")	
Weight			31.0kg (68.0lbs)			29.0kg (64lbs)	
Flying hardware			15 x M10, 4 x M8			16 x M10	
Optional accessories			UB2112, HAF2-2112, HAF3-2112, VAF2-2112			UB2112	
3rd Party	Omnimount (US)		120.0 series			-	
Accessories	Multimount (US, Allen products)		120 series			-	
	Powerdrive (UK)		120 series			-	
	Ohashi (Japan)		-			-	

\*1 2 hours, IEC \*2 AES \*3 Bi-amp mode, Yamaha recommended DSP configuration, full-space \*4 At this frequency, the transducers produce equal sound pressure levels.

Model	IF2112M/64			IF2112M/95		IF2112M/99	
Nominal coverage @-6dB (Horizontal x Vertical)	60 x 40 (rotatable)			90 x 50 (rotatable)		90 x 90	
Nominal impedance	Passive		8Ω				
	Bi-amp MF/HF		LF:8Ω, HF:8Ω				
Power rating	Passive <sup>*1</sup>	NOISE	350W				
		PGM	700W				
		MAX	1400W				
	Bi-amp LF/HF <sup>*2</sup>	NOISE	LF:400W, HF:60W				
		PGM	LF:800W, HF:120W				
		MAX	LF:1600W, HF:240W				
Sensitivity (1W, 1m)	Passive	95dB SPL					
	Bi-amp	LF	96dB SPL				
		HF	110dB SPL	108dB SPL	108dB SPL		
	Continuous SPL (calculated)	Passive	120dB SPL				
Bi-amp		LF	121dB SPL				
		HF	128dB SPL	126dB SPL	126dB SPL		
Peak SPL (calculated)	Passive	126dB SPL					
	Bi-amp	LF	127dB SPL				
		HF	134dB SPL	132dB SPL	132dB SPL		
Components	LF	12" woofer, 3 " voice coil					
	HF	Rotatable constant directivity horn, 1.4" exit, 1.7" voice coil compression driver					
Frequency range (-10dB) <sup>*3</sup>	55Hz-20kHz						
Passive Crossover Frequency <sup>*4</sup>	1kHz			1.1kHz	1.1kHz		
Connectors	1 x NL4 and barrier strip, wired in parallel						
Shape	30 degrees trapezoidal						
Dimensions (W x H x D)	378 x 695 x 454mm (14.9" x 27.4" x 17.9")						
Weight	28.0kg (61.0lbs)						
Flying hardware	15 x M10, 4 x M8						
Optional accessories	UB2112, HAF2-2112, HAF3-2112, VAF2-2112						
3rd Party	Omnimount (US)		120.0 series				
Accessories	Multimount (US, Allen products)		120 series				
	Powerdrive (UK)		120 series				
	Ohashi (Japan)		-				

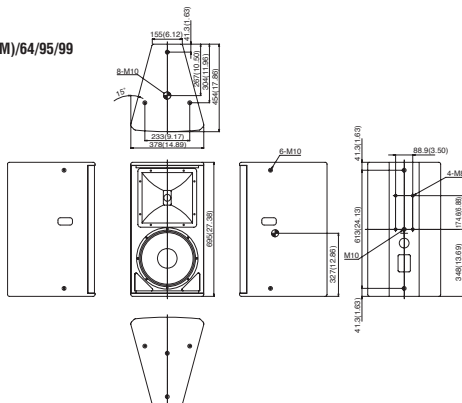
\*1 2 hours, IEC \*2 AES \*3 Bi-amp mode, Yamaha recommended DSP configuration, full-space \*4 At this frequency, the transducers produce equal sound pressure levels.

### DIMENSIONS

unit : mm (inch)

● Center of balance

IF2112(M)/64/95/99



IF2112/AS

