

 **YAMAHA**
Make Waves

CSP-200 SERIES

FEEL THE MUSIC. PLAY SMART.

 **YAMAHA**
Make Waves



EN

WNCTCSP200EN

Printed in Germany

Yamaha Music Europe GmbH • Siemensstr. 22-34 • 25462 Rellingen/Germany
www.yamaha.com

The cabinet colours and finishes shown in this brochure may appear different than those on the actual products. Specifications and appearance are subject to change without prior notice. iPad / iPhone, microphones etc. not included where shown in images. iPad, iPhone and iPod touch are trademarks of Apple Inc., registered in the U.S. and other countries. GrandTouch™ is a trademark of Yamaha Corporation. Status: August 2023

Clavinova®

THE EXCELLENCE OF THE CSP-200 SERIES



The Clavinova CSP-200 Series digital pianos allow even beginners to play their favourite songs with ease. It features unique Stream Lights, which guide you to the keys to play next, and the Smart Pianist app lets you enjoy the instrument with your smart device. With an authentic playing feel and rich tonal quality like that of a grand piano, it offers profound playing enjoyment.

Each model in the Clavinova CSP-200 Series includes the Yamaha CFX and Bösendorfer Imperial grand piano sounds. While CSP-255 and CSP-275 have an 88-key GrandTouch-S™ weighted keyboard for a piano-like feel (CSP-275 even has real wood keys), the CSP-295 and CSP-295GP include a realistically expressive 88-key GrandTouch™ counterweighted keyboard. The luxurious, elegant CSP-295GP also provides GrandTouch™ pedals that recreate the unique resistance of grand piano pedals, heavy when depressed and light on release.

Moreover, the free Yamaha Smart Pianist app provides intuitive operation of the instrument and can be connected wirelessly via Bluetooth® MIDI.

COLOUR VARIATION:



CSP-255



CSP-275



CSP-295



CSP-295GP



LIGHTS



Powerful amplification:

- 40 W x 2 amplifiers (CSP-255)
- (50 W + 50 W) x 2 amplifiers (CSP-275)
- (50 W + 50 W + 40 W) x 2 amplifiers (CSP-295 & CSP-295GP)

Speakers:

- 16 cm x 2 speaker system (CSP-255)
- (16 cm + 8 cm) x 2 speaker system (CSP-275)
- (16 cm + 8 cm + 2.5 cm (dome) with Bidirectional Horn) x 2 speaker system, Spruce Cone Speaker (CSP-295)
- (16 cm + 8 cm + 2.5 cm (dome) with Waveguide) x 2 + 20 cm, Spruce Cone Speaker, Twisted Flare Port (CSP-295GP)

HIGHLIGHTS

Keyboard action:

- GrandTouch-S™ keyboard (CSP-255)
- GrandTouch-S™ keyboard with wooden keys (CSP-275)
- GrandTouch™ keyboard with counterweights, 88-key Linear Graded Hammers (CSP-295 & CSP-295GP)

- Yamaha CFX and Bösendorfer Imperial piano samples, Yamaha CFX and Bösendorfer binaural sampling

Huge variety of instrument voices:

- 819 Voices in CSP-255 & CSP-275
- 919 Voices in CSP-295 & CSP-295GP

Wide array of backing Styles:

- 495 Styles in CSP-255 & CSP-275
- 525 Styles in CSP-295 & CSP-295GP

- 256-note polyphony
- Virtual Resonance Modeling (VRM)
- Grand Expression Modeling
- Microphone connection
- Built-in Bluetooth® audio
- Wireless connection to the Smart Pianist app via Bluetooth® MIDI
- USB-C to connect and charge both Android and Apple devices
- Grand Acoustic Imaging (CSP-295 & CSP-295GP only)
- GP Response Damper Pedal (CSP-295 & CSP-295GP only)
- GrandTouch™ pedals (CSP-295GP only)



CSP-200 SERIES



PRACTICE YOUR FAVOURITES AMONGST THE EXTENSIVE LINEUP OF PRESET SONGS

The Clavinova CSP-200 Series features an ample selection of preset songs, from well-known popular and classical tunes to practice exercises. View the sheet music on Yamaha's Smart Pianist app, and use Stream Lights to guide your practice sessions. Moreover, you can add new songs to your collection on the app.



CSP-295

INTUITIVE OPERATION WITH YAMAHA'S SMART PIANIST APP

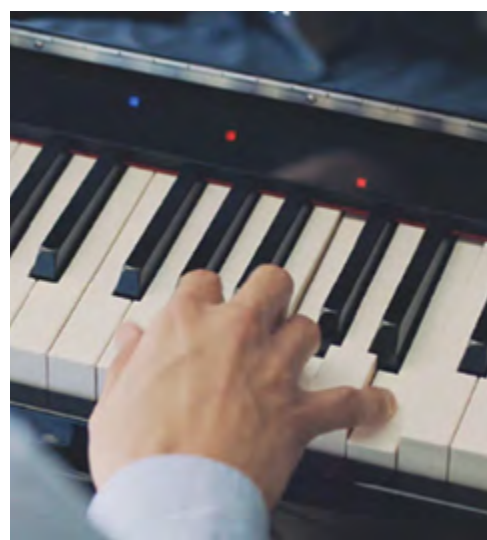
The Yamaha Smart Pianist app gives you complete, detailed control over the instrument from your smart device. This intuitive app makes it easy to select the desired Voice from a variety of instrument sounds, and even switch between different virtual performance spaces and their acoustic environment (for example, a concert hall or cathedral).

The app is available via the App Store and Google Play.



STREAM LIGHTS ILLUMINATE THE KEYS TO PLAY NEXT, MAKING MUSIC EVEN MORE FUN

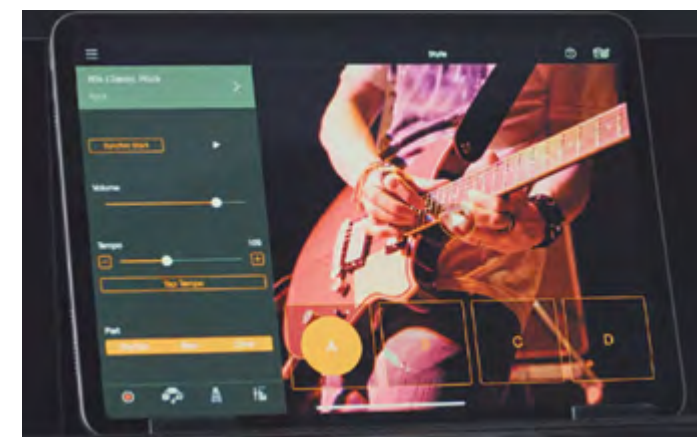
Even if you can't read music, Stream Lights—used with the interactive scores shown in the Smart Pianist app—guide you to the keys to play next, making your practice more enjoyable. You can also set the function for the left or right hand only, or slow the tempo at the hard parts to help you practice. There is even a Guide function that pauses the song until you play the correct keys.



AUDIO TO SCORE LETS YOU TRY YOUR HAND AT THE TUNES YOU WANT RIGHT AWAY



When you want to play a song, but don't know where to begin or what to do, just use the Audio to Score feature included in Yamaha's Smart Pianist app. The app analyses MP3s and other audio song data and creates chord charts with over 50 varieties of accompaniment to suit your playing level. All you have to do is follow the Stream Lights.



ADD VARIETY TO YOUR PERFORMANCE WITH VOICES AND BACKING STYLES

The Clavinova CSP-200 Series offers unrivaled capacity for musical expression, with a huge variety of instrument voices that belie their simple, elegant exteriors. Featuring a wide array of backing Styles, the CSP Series allows you to enjoy great-sounding performances with authentic accompaniment that will enhance your playing across a diverse range of musical genres.

THERE IS SO MUCH MORE TO DISCOVER



LINE-UP COMPLETE

The CSP-295 completes the line-up of CSP-200 Series as the model with an elegant design that has the appearance of an acoustic piano and gives an elegant look with the glamour of a grand piano which the CSP-295GP offers in this model.

TOUCH & FEEL

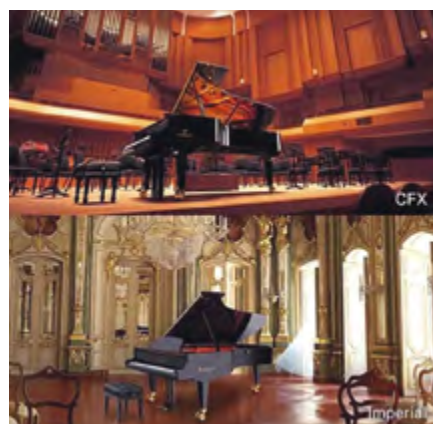
Featuring the latest GrandTouch™ and GrandTouch-S™ keyboards with a broad dynamic range of touch and response on the level of a grand piano. CSP-295GP is even equipped with GrandTouch™ Pedals.



CFX & BÖSENDORFER PIANO SAMPLES

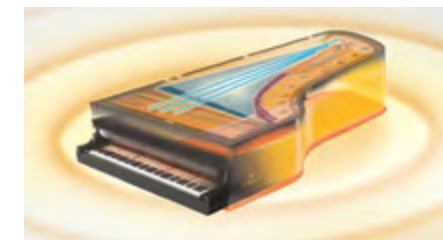
Latest Virtual Resonance Modeling (VRM) applies to the Piano Voices. In addition, the Grand Expression Modeling introduced in the CSP-200 Series translates the widely varied input from the pianist's fingers into the same limitless tonal variation of a grand piano. The CSP Series lets you enjoy playing with the voices of the CFX—Yamaha's top-flight concert grand piano and the piano of choice at competitions around the world—the warm tones of the Bösendorfer Imperial grand piano, and many more noted pianos, all on a single instrument.

In addition, binaural sampling was used for the Bösendorfer Imperial as well as the Yamaha CFX to offer a stunning experience when playing with headphones.



FINEST PIANO SOUND QUALITY

Latest Virtual Resonance Modeling (VRM) applies to the Piano Voices. In addition, the Grand Expression Modeling introduced in the CSP-200 Series translates the widely varied input from the pianist's fingers into the same limitless tonal variation of a grand piano.



CONTENT

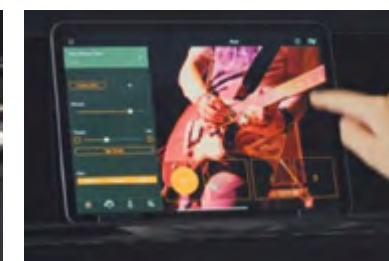
The CSP-200 Series features new voices, new styles and even new well-known preset songs to use with the Stream Light guide function or to sing along with.



BI-DIRECTIONAL HORNS

CSP-295 ONLY

This powerful 3-way system features mid and treble units, as well as bass speakers, which are available only on the CSP-295—and all units are optimally balanced and placed accordingly in the body to simulate the sound image of a grand piano.



EASY TO CONNECT

Both Bluetooth® MIDI and Audio allows you an easy integration for your mobile devices even without cables. As well, a USB cable (Type-C to Type-C) is included, and users who have a Smart Device with a Type-C terminal can conveniently connect the instrument to their smart device with a single cable.

CSP-295 AND CSP-295GP THE TOP-MODELS OF CSP-200 SERIES

Clavinova pianos boast excellent playability and versatile functions, along with a refined, authentic design and modern aesthetics befitting the instrument that sets the contemporary standard for pianos. At the heart of the Clavinova design concept is the way the player feels when they take their seat in front of a Clavinova piano. Unnecessary elements are removed from the player's field of vision to create a convincingly natural space that feels just like sitting at an acoustic piano. A Clavinova piano is a part of the player's everyday life—contemporary accents and colour variations are available to mesh with any interior design or lifestyle.

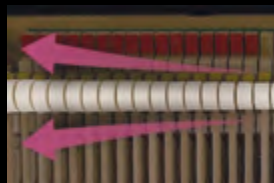
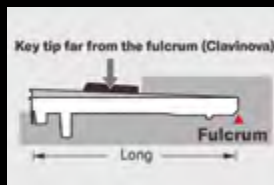
The top-model CSP-295 has an elegant design that has both the appearance and feel of an acoustic piano, featuring a rotating lid with a music stand, and the absolute minimum set of controls.

The Grand Piano version CSP-295GP features a piano top that can be opened and closed, giving it an elegant appearance with the glamour of a grand piano.



Both models include the realistically expressive 88-key GrandTouch™ counterweighted keyboard with a greater length of keys that give the player more leverage, allowing for better expressive control, even at the backs of the keys.

This is the same support length found on the Yamaha S3X premium grand piano, and is the longest support length used on any digital piano. The 88-key Linear Graded Hammers of the Clavinova is the first of its kind to faithfully duplicate this graded touch with differing weights and key return on each one of its keys. In addition these Clavinova feature carefully adjusted counterweights for improved playability when playing pianissimo with a light touch, and better key return in rapid passages. The keyboard of these Clavinova have been fine-tuned to offer optimal balance, emphasising its superb playability and grand piano response.



The GP Response Damper Pedal of both CSP-295 and CSP-295GP offer a grand piano-style resistance curve, starting out light to the touch and growing heavier as the pedal is depressed further. This allows players to become accustomed to the nuances of delicate pedaling.



The GrandTouch™ Pedals of CSP-295GP even offer the unique friction felt when using a grand piano pedal, heavy when pressed and light on the return. They also feature a mechanism with the fulcrum in a similar position to that on a grand piano, bringing the playing experience much closer to a grand.



The bass, mid, and treble speakers are optimally balanced and placed accordingly in the body to simulate the sound image of a grand piano. Additional bidirectional horns in CSP-295 deliver an abundance of sound, creating a natural sound field akin to the resonance from a grand piano soundboard. In addition to the resonance and dynamic range created by the grand piano shape, the CSP-295GP is equipped with Waveguide which makes the sparkling highs of the instrument resonate far and wide to both players and listeners. Drawing from our experience in building both acoustic pianos and high-end speakers, the CSP-295 and CSP-295GP speaker cones use pulp from the same spruce wood used to make acoustic piano sound boards. The result is a more natural, piano-like attack to the sound that is more piano-like when you play the keys.



CSP-295



SOPHISTICATED PIANO PLAYING EXPERIENCE

The piano quality of the Clavinova is a marvelous combination of more than a century's know-how, accumulated from our acoustic piano making, with the latest digital technology—all designed to give you the finest playing experience. The CSP-200 Series offers playability approaching that of a grand piano as well as beautifully expressive sound, inspiring and motivating you to even greater musical heights.

Q
U
A
L
I
T
Y

Q
U
A
L
I
T
Y

Q
U
A
L
I
T
Y

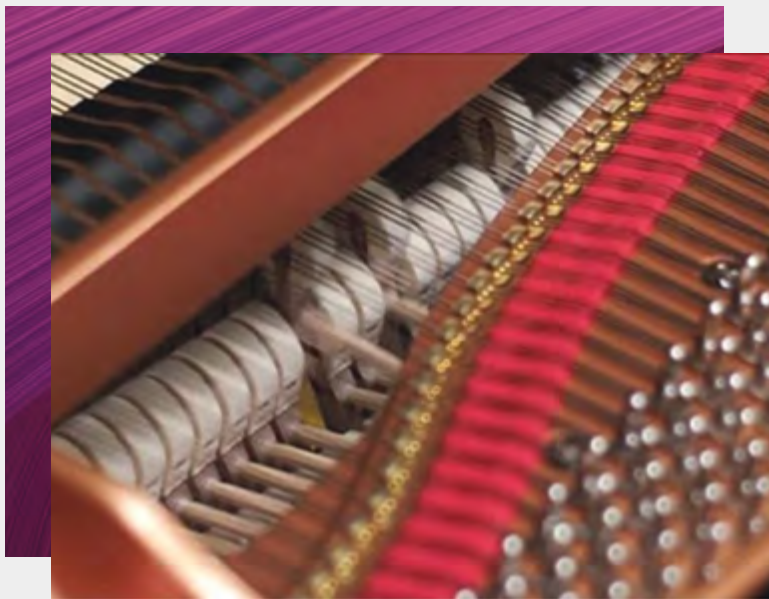
Q
U
A
L
I
T
Y

Q
U
A
L
I
T
Y



Virtual Resonance Modeling performs real-time modeling of the sympathetic resonance created by the behavior of the strings and body of the instrument—the foundation of the beautiful sound of a genuine grand piano. Also, the latest acoustic design technology delivers lifelike concert grand piano tone and resonance to your home for you to enjoy.

S
E
N
S
I
T
I
V
I
T
Y



Grand Expression Modeling is a groundbreaking new technology that enables pianists to use their techniques to produce the limitless tonal variation unique to grand pianos. The ability to vary the intensity and speed of touch to produce different tones adds another dimension to the joy of musical expression.

P
L
A
Y
A
B
I
L
I
T
Y



Featuring the latest GrandTouch™/GrandTouch-S™ keyboards with a broad dynamic range of touch and response on the level of a grand piano. Excellent consistency and nuanced expression give the pianist the utmost control over touch.



CSP-295GP

- GrandTouch™ keyboard with counterweights, 88-key Linear Graded Hammers
- Yamaha CFX and Bösendorfer Imperial piano samples, Yamaha CFX and Bösendorfer binaural sampling
- 919 Voices, 403 Songs and 525 Styles
- Stream Lights
- “Audio To Score” function
- Virtual Resonance Modeling (VRM)
- Grand Expression Modeling
- **GrandTouch™ Pedals** with GP Response Damper
- Grand Acoustic Imaging
- (50 W + 50 W + 40 W) x 2 amplifiers
- (16 cm + 8 cm + 2.5 cm (dome) **with Waveguide**) x 2 + 20 cm, Spruce Cone Speaker, **Twisted Flare Port**
- Microphone connection
- Built-in Bluetooth® audio
- Wireless connection to the Smart Pianist app via Bluetooth® MIDI



Available colours:



Points in purple text indicate the features that are enhanced or added compared to the next smaller model.



CSP-295

- **GrandTouch™ keyboard with counterweights, 88-key Linear Graded Hammers**
- Yamaha CFX and Bösendorfer Imperial piano samples, Yamaha CFX and Bösendorfer binaural sampling
- **919 Voices**, 403 Songs and **525 Styles**
- Stream Lights
- “Audio To Score” function
- Virtual Resonance Modeling (VRM)
- Grand Expression Modeling
- **GP Response Damper**
- **Grand Acoustic Imaging**
- **(50 W + 50 W + 40 W) x 2 amplifiers**
- **(16 cm + 8 cm + 2.5 cm (dome) with Bidirectional Horn) x 2 speaker system, Spruce Cone Speaker**
- Microphone connection
- Built-in Bluetooth® audio
- Wireless connection to the Smart Pianist app via Bluetooth® MIDI



Available colours:



Points in purple text indicate the features that are enhanced or added compared to the next smaller model.



CSP-275

- GrandTouch-S™ keyboard **with wooden keys**
- Yamaha CFX and Bösendorfer Imperial piano samples, Yamaha CFX and Bösendorfer binaural sampling
- 819 Voices, 403 Songs and 495 Styles
- Stream Lights
- “Audio To Score” function
- Virtual Resonance Modeling (VRM)
- Grand Expression Modeling
- **(50 W + 50 W) x 2 amplifiers**
- **(16 cm + 8 cm) x 2 speaker system**
- Microphone connection
- Built-in Bluetooth® audio
- Wireless connection to the Smart Pianist app via Bluetooth® MIDI



Available colours:



CSP-255

- GrandTouch-S™ keyboard
- Yamaha CFX and Bösendorfer Imperial piano samples, Yamaha CFX and Bösendorfer binaural sampling
- 819 Voices, 403 Songs and 495 Styles
- Stream Lights
- “Audio To Score” function
- Virtual Resonance Modeling (VRM)
- Grand Expression Modeling
- 40 W x 2 amplifiers
- 16 cm + 8 cm x 2 speaker system
- Microphone connection
- Built-in Bluetooth® audio
- Wireless connection to the Smart Pianist app via Bluetooth® MIDI



Available colours:



SPECIFICATION CHART

MODEL NAME		CSP-295GP	CSP-295	CSP-275	CSP-255	
Control Interface	Keyboard	Number of Keys	88			
		Type	GrandTouch™ Keyboard: wooden keys	GrandTouch™ Keyboard: wooden keys	GrandTouch™-S Keyboard: wooden keys	GrandTouch™-S Keyboard: plastic keys
		88-key Linear Graded Hammers	Yes		-	
		Counter weight	Yes		-	
		Touch Response	Hard2, Hard1, Medium, Soft1, Soft2, Fixed			
	Pedal	Number of Pedals	3: Damper (with Half-pedal function), Sostenuto, Soft			
		Assignable Functions	Sustain, Sostenuto, Soft, Glide, Style Start/Stop, Volume, etc.			
		GrandTouch™ Pedals	Yes	-		
		GP Response Damper Pedal	Yes		-	
	Panel	Language	English			
Cabinet	Key Cover Style	Sliding	Folding	Sliding		
	Music Rest	Yes				
	Music Brace	Yes				
Voices	Tone Generation	Piano Sound	Yamaha CFX, Bösendorfer Imperial (Same as CLP-700 Series)			
		Binaural Sampling	Yes („CFX Grand“ and „Bösendorfer“ only)			
	Piano Effect	VRM	Yes (Same as CLP-700 Series)			
		Grand Expression Modeling	Yes			
		Key-off Samples	Yes			
		Smooth Release	Yes			
	Polyphony (max.)	256				
	Preset	Number of Voices	872 Voices + 47 Drum/SFX Kits	772 Voices + 47 Drum/SFX Kits		
Compatibility	(for song playback) XG, GS, GM, GM2					
Effects	Types	Reverb	65 Types			
		Master EQ	5 Types			
		Vocal Harmony	44 Types			
		Intelligent Acoustic Control (IAC)	Yes			
		Stereophonic Optimizer	Yes			
		Mic/Line	Standard, Brighter, Louder			
		Functions	Layer	Yes		
	Split		Yes			
Styles	Preset	Qty.	525	495		
	Style Control	INTRO x 1, ENDING x 1, MAIN x 4, FILL IN x 4				
Songs (MIDI)	Preset	Qty.	403 (50 popular, 50 classics, 303 lesson)			
	Recording	Number of Tracks	16			
		Data Capacity	depending on the Smart Device			
	Format	Playback	SMF (Format 0 & 1), XF			
Recording		SMF (Format 0)				
Songs (Audio)	Recording	Recording Time (max.)	depending on the Smart Device			
	Format	Playback	supported format by the Smart Device			
	Recording	WAV/AAC				
	Time Stretch	Yes				
	Pitch Shift	Yes				
	Melody Suppressor	Yes				

MODEL NAME		CSP-295GP	CSP-295	CSP-275	CSP-255
Functions	Registration Memory	Yes			
	Guide	Correct Key, Any Key, Your Tempo			
		Stream Lights	Yes (4 steps)		
	Songs	Score Display Function	Yes		
		Chord Display Function	Yes		
		Lyrics Display Function	Yes		
	Overall Controls	Metronome	Yes		
		Tempo	5 - 500, Tap Tempo		
		Transpose	-12 - 0 - +12		
		Tuning	414.8 - 440.0 - 466.8 Hz		
		Scale Type	9		
	Bluetooth® (*depends on the destination)	Audio	Supported profile	A2DP	
Compatible codec			SBC		
MIDI		Comply with Bluetooth® Low Energy MIDI Specification			
Bluetooth® version		5.0			
Wireless output		Bluetooth® Class 2			
Maximum communication distance		Approx. 10m			
Radio Frequency (Operational Frequency)		2401 - 2481 MHz			
Maximum output power (EIRP)		4 dBm			
Type of modulation		FHSS			
Connectivity		Headphones	Standard stereo phone jack (x 2)		
	Microphone	Mic/Line In, Input Volume			
	MIDI	IN, OUT, THRU			
	AUX IN	Stereo mini jack			
	AUX OUT	L/L+R, R			
	AUX PEDAL	Yes			
	USB TO DEVICE	Yes			
	USB-C	Yes			
Sound System	Amplifiers (Automatic Gain Limiter)	(50W + 50W + 40W) x 2	(50W + 50W + 40W) x 2	(50W + 50W) x 2	40W x 2
	Speakers	(16 cm + 8 cm + 2.5 cm (dome) with Waveguide) x 2 + 20 cm, Spruce Cone Speaker, Twisted Flare Port	(16 cm + 8 cm + 2.5 cm (dome) with Bidirectional Horn) x 2, Spruce Cone Speaker	(16 cm + 8 cm) x 2	16 cm x 2
Power Supply	Auto Power Off	Yes			
Size [mm]	W x H x D	(Polished Finish) 1430 x 931 x 1093, 1580 with lid up	1437 x 1127 (1129) x 484	1412(1418) x 1041 x 465 (466)	1412(1418) x 1041 x 465 (466)
Weight [kg]	(Polished Finish)	99 (103)	99 (103)	67 (69)	58 (61)

DISCOVER MORE ABOUT CSP-200 SERIES ONLINE:

